



# Majority **Kite**

Pocket DAB / DAB+ / FM Radio

CB1-DAB-BLK



User Guide

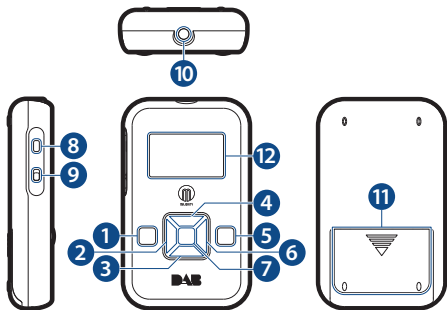
# Contents

<b>Controls and Functions</b> .....	1
<b>What's in the Box?</b> .....	2
<b>Instruction Guide</b> .....	3
Basic Operation .....	3
DAB Radio, Prune, Dynamic Range Compression, Manual Tuning and Set up Preset for DAB Radio .....	4
FM Radio and Set up Preset for FM Radio .....	8
Station Information for DAB and FM Radio .....	11
<b>Other Functions</b> .....	13
<b>Technical Specification</b> .....	16
<b>Warranty</b> .....	16
<b>Important Safety Information</b> .....	17



Watch video tutorials and register  
your product for a FREE 3-year  
warranty at [www.majorityradios.co.uk](http://www.majorityradios.co.uk)

# Controls and Functions



1. Mode DAB/FM
2. Previous
3. Volume -
4. Volume +
5. Info

6. Next
7. Ok/Confirm/  
Preset
8. Lock
9. On/Off

10. Earphone jack
11. Battery  
Compartment
12. Display Screen

# What's in the Box?

- Majority Kite Pocket DAB DAB+ /FM Radio
- Earphones
- User Guide



Please note all (Ref.) refer to the *Controls and Functions* mapping guide on Page 1.

## Basic Operation

---

This portable radio is powered by 3 AAA batteries (not supplied). See Power Source Page 15.

Turn on the power supply by switching the 'ON/OFF' button (Ref.9) on the side of the system to the 'ON' position. "Welcome to Digital Radio" will show on the display.

Then the display will show "Searching" and can take a few minutes to scan for stations. Once scanning has completed the display will show the time and station information.

Press the 'Mode DAB/FM' button (Ref.1) to switch to FM or again to switch back to DAB.

Ensure that the earphones are correctly inserted into the earphone jack (Ref.10) on the top of the system, as they also act as the antenna of your radio. Without them, no DAB/FM signal will be received.

### *To lock your pocket radio*

To avoid accidentally changing stations if the radio is in your pocket, press and **hold** the 'Lock' button (Ref.8) for a few seconds. A lock sign will appear on the top left of the display screen to show that you have successfully locked the radio. To unlock the radio, press and **hold** the 'Lock' button (Ref.8) for a few seconds and the locked sign will disappear from the display screen.

## DAB / DAB+ Radio

---

Press the 'Mode DAB/FM' button (**Ref.1**). On first use, DAB Radio will automatically start scanning all stations and save them.

To scan (if the unit hasn't automatically done so, or shows no signal) press and **hold** the 'Info' button (**Ref.5**) and when the display shows "FULL SCAN", press the 'Ok' button (**Ref.7**).

The unit will start scanning up the frequency band and store all stations that have a good signal. Please note: if you are not in a good DAB signal area then you will not get a strong signal, if any.

The radio will automatically save all those stations that have a strong signal. After searching has finished it will automatically play the first station stored.

To select any of the stations that have been stored, use the 'Next' (**Ref.6**) and 'Previous' (**Ref.2**) buttons to navigate through the stations. To listen to a chosen station press the 'Ok' button (**Ref.7**).

The radio will display station information when you press the 'Info' button (**Ref.5**). Press multiple times to view all information available (See page 11).

When you turn the radio on again after switching it off, it will automatically tune to the same station (DAB or FM) that was last selected.

## ***Prune***

To remove stations which are listed but have become unavailable:

Find the station you would like to remove.

Press and **hold** the 'Info' button (**Ref.5**). Use the 'Next' (**Ref.6**) and 'Previous' (**Ref.2**) buttons to navigate through the choices.

Choose 'Prune', press the 'Ok' button (**Ref.7**) to confirm.

Use the 'Next' (**Ref.6**) and 'Previous' (**Ref.2**) buttons to choose 'Yes/No'.

Press the 'Ok' button (**Ref.7**) to confirm. The unavailable station will now be deleted if you chose 'Yes'.

## ***Dynamic Range Compression (DRC)***

This function enables you to reduce the difference between the maximum and minimum levels in audio volume.

Press and **hold** the 'Info' button (**Ref.5**), and use the 'Next' (**Ref.6**) and 'Previous' (**Ref.2**) buttons to navigate through the choices.

Choose 'DRC', press the 'Ok' button (**Ref.7**) to confirm.

Then use the 'Next' (**Ref.6**) and 'Previous' (**Ref.2**) buttons to choose between DRC "off", "high" or "low".

Once you have chosen press the 'Ok' button (**Ref.7**) to confirm.

## ***Manual Tuning***

As well as an auto tune function, you can manually tune the receiver. This can help you when aligning your aerial or when adding stations that were missed while auto tuning.

Press and **hold** the 'Info' button (**Ref.5**), use the 'Next' (**Ref.6**) and 'Previous' (**Ref.2**) buttons to navigate through the choices.

Choose "Manual Tune", and press the 'Ok' button (**Ref.7**) to confirm.

Then use the 'Next' (**Ref.6**) and 'Previous' (**Ref.2**) buttons to cycle through the DAB+ channels, which are from 5A to 13F.

Once you have chosen press the 'Ok' button (**Ref.7**) to confirm.

## ***How to preset a radio station***

You can store a station using the 'Preset' button (**Ref.7**) and save up to 10 stations.

First, tune the station you want to store. Then press and **hold** the 'Ok' button (**Ref.7**), "Preset Recall" will show on the display.

Use the 'Previous' (**Ref.2**) or 'Next' (**Ref.6**) buttons until "Preset Store" is displayed. Press the 'Ok' button (**Ref.7**) to confirm. "Preset Store Empty '1'" will show on the display.

Press the 'Previous' (**Ref.2**) or 'Next' (**Ref.6**) buttons to change the "1" to the number you want to store the station as.

Press the 'Ok' button (**Ref.7**) to save.

The display will then show "Preset (1) stored".



## ***How to play a preset radio station***

Once you have stored all your selected stations, press and **hold** the 'Ok' button (**Ref.7**). Use 'Previous' or "Next' to scroll through your options and select "Preset Recall" by pressing the 'Ok' button (**Ref.7**).

Use the 'Previous' (**Ref.2**) or 'Next' (**Ref.6**) buttons to scroll through your preset stations, up to 10.

Press the 'Ok' button (**Ref.7**) to select your choice.



Watch video tutorials and register your product for a FREE 3-year warranty at [www.majorityradios.co.uk](http://www.majorityradios.co.uk)

## FM Radio

---

Press the 'Mode DAB/FM' button (**Ref.1**).

The first time you do this FM frequency "87.5 MHz" will be displayed on the screen.

To auto scan, press and **hold** the 'Previous' button (**Ref.2**) and then release. This will scan down the stations. To scan up the stations press and **hold** the 'Next' button (**Ref.6**).

After searching has finished the unit will automatically play the first station stored with a good signal.

The radio will display station information when you press the 'Info' button (**Ref.5**). Press multiple times to view all information available (See page 12).

### *How to tune a specific frequency manually*

To listen to a specific frequency, you can search quickly by pressing and holding the 'Next' button (**Ref.6**) to search up and the 'Previous' button (**Ref.2**) to search down the bandwidth. Searching will stop when you press the button again. To search slowly, press the 'Next' (**Ref.6**) and 'Previous' (**Ref.2**) buttons multiple times rather than holding.



Watch video tutorials and register your product for a FREE 3-year warranty at [www.majorityradios.co.uk](http://www.majorityradios.co.uk)

## ***Mono and Auto***

In working mode, press and **hold** the 'Info' button (Ref.5). Use the 'Previous' button (Ref.2) to highlight your option.

Choose "Audio Setting" and press the 'Ok' button (Ref.7).

The display will show "Stereo Allowed" or "Forced Mono". Use the 'Next' button (Ref.6) to switch between the two.

Choose your option and press the 'Ok' button (Ref.7) to confirm.

The default audio setting for all stations is stereo mode. If you want to improve the quality, use the above instructions to change it to Mono mode.

## ***How to preset a radio station***

You can store the station using the 'Preset' button (Ref.7) and save up to 10 stations.

First, tune the station you want to store. Then press and **hold** the 'Ok' button (Ref.7). "Preset Recall" will show on the display.

Use the 'Previous' (Ref.2) or 'Next' (Ref.6) buttons to change to "Preset Store", and press the 'Ok' button (Ref.7) to confirm. "Preset Store Empty '1'" will show on the display.

Press the 'Previous' (Ref.2) or 'Next' (Ref.6) buttons to change the "1" to the number you want to store the station as.

Press the 'Ok' button (Ref.7) to save.

The display will then show "Preset (1) stored".

## ***How to play a preset radio station***

Once you have stored all your selected stations you can press and **hold** the 'Ok' button (**Ref.7**), then select "Preset Recall" by pressing the 'Ok' button (**Ref.7**).

Use the 'Previous' (**Ref.2**) or 'Next' (**Ref.6**) buttons to scroll through your preset stations, up to 10.

Press the 'Ok' button (**Ref.7**) to select your choice.



Watch video tutorials and register your product for a FREE 3-year warranty at [www.majorityradios.co.uk](http://www.majorityradios.co.uk)

## Station Information for DAB / DAB+ and FM Radio

---

### ***DAB / DAB+ Radio***

Press the 'Info/Menu' button (**Ref.5**) repeatedly to show the programme information.

**Bit Rate:** Shows the data rate at which the signal is being transmitted.

**Bit Error Rate (BER):** Provides details of the signal error rate.

**Channel and Frequency:** Displays the station's transmission channel number and frequency.

**PTY (Programme Type):** Shows the type and description of the programme provided by the DAB station.

**Time and Date:** Displays the time and date information provided by the broadcaster.

**DAB indication:** Indicates DAB mode.

**Dynamic Label Segment (DLS):** Displays scrolling text information supplied by the broadcaster.

## **FM Radio**

Press the 'Info/Menu' button (**Ref.5**) repeatedly to show the programme information.

**Signal Strength:** Displays a signal bar with the signal strength of the current station.

**Time and Date:** Displays the time and the date.

**Frequency:** Displays the station's transmission frequency.

**Audio Type:** Displays the audio type of the station you are listening to. It will either be Stereo or Mono.

**Radio Text:** Displays scrolling text information supplied by the broadcaster.

**Programme Type:** Displays a description of the type of programme provided by the broadcaster.



Watch video tutorials and register your product for a FREE 3-year warranty at [www.majorityradios.co.uk](http://www.majorityradios.co.uk)

## Other Functions

---

### ***System Reset***

Press and **hold** the 'Info' button (**Ref.5**). Use the 'Previous' (**Ref.2**) or 'Next' (**Ref.6**) buttons to scroll through the options. Choose "System" then press the 'Ok' button (**Ref.7**).

Use the 'Previous' (**Ref.2**) or 'Next' (**Ref.6**) buttons to scroll through the options. Choose "Factory Reset" and press the 'Ok' button (**Ref.7**).

Then choose "Yes/No" using the 'Previous' (**Ref.2**) or 'Next' (**Ref.6**) buttons to switch between the options. Press the 'Ok' button (**Ref.7**) to confirm and after a short delay the radio will re-start and perform a quick scan.

### ***SW Version – Software Version Display***

Press and **hold** the 'Info' button (**Ref.5**). Use the 'Previous' (**Ref.2**) or 'Next' (**Ref.6**) buttons to scroll through the options. Choose "System" then press the 'Ok' button (**Ref.7**).

Choose "SW version" and press the 'Ok' button (**Ref.7**) to confirm and the details will be displayed on the screen.

## *Display*

Press the 'Info/Menu' button (**Ref.5**) multiple times to display: Radio Data System (RDS) radio text, Programme type, Station name, Mono/Stereo, Time and Date.

## *Time and Date*

On first use of DAB Radio, the time and date will automatically update.

## *Info Button*

Use the 'Info' button (**Ref.5**) to scroll through the functions. This process is on a loop so, if you go past the one you want, continue to press 'Info' until your choice becomes available again.

## *Backlight*

Press and **hold** the 'Info' button (**Ref.5**). Use the 'Previous' (**Ref.2**) or 'Next' (**Ref.6**) buttons to scroll through the options. Highlight "System" and press the 'Ok' button (**Ref.7**).

Next, choose "Backlight" and press the 'Ok' button (**Ref.7**) to confirm.

Then choose "Timeout" and press the 'Ok' button (**Ref.7**) to confirm.

You now have the following options to choose from: On, 10, 20, 30, 45, 60, 90, 120, 180 seconds. Use the 'Previous' (**Ref.2**) or 'Next' (**Ref.6**) buttons to switch between the options. Press the 'Ok' button (**Ref.7**) to confirm. The backlight will now stay on for the chosen time period.



## **Power Source**

This portable radio is powered by 3 AAA batteries (not included).

To open the battery compartment (**Ref.11**), put your fingers on the upper part of the open symbol, press down and pull the door out of the lock. Insert the 3 AAA batteries. Make sure they are inserted right way round paying attention to the +/- polarities.

Always remove the batteries if the unit is not going to be used for an extended period of time.

When the batteries start to run out, the unit will show "Low Power" on the display and then will switch off automatically. You will be able to switch it back on for a little while, until the batteries are fully depleted.



Watch video tutorials and register your product for a **FREE 3-year warranty** at [www.majorityradios.co.uk](http://www.majorityradios.co.uk)

## Technical Specifications

---

Power Supply	DC4.5V (3 AAA)
Radio frequency range	FM 87.5MHz DAB/DAB+ 174-240MHz

---

## Warranty

---

All products come with a standard 12 month warranty.

All items must be registered on [www.majoritytech.co.uk](http://www.majoritytech.co.uk) for the warranty to be valid. Once on the web page use the menu to find "register your product".

You will also be given the chance to extend your warranty for an additional 24 months free of charge.



Watch video tutorials and register your product for a FREE 3-year warranty at [www.majorityradios.co.uk](http://www.majorityradios.co.uk)

# IMPORTANT SAFETY INFORMATION

1. Read these instructions.
2. Keep these instructions. Instructions are also available for download at [www.majoritytech.co.uk](http://www.majoritytech.co.uk)
3. Heed all Warnings.
4. Follow all instructions.
5. Do not clean the apparatus near or with water.
6. Clean only with a dry cloth.
7. Do not block any ventilation openings. Install in accordance with the manufacturer's instructions.
8. Do not install near any heat sources such as radiators, heat registers, stoves, or other apparatus (including amplifiers) that produce heat.
9. Protect the power cord from being walked on or pinched particularly at plugs, convenience receptacles, and the point where they exit from the apparatus.
10. Only use attachments/accessories specified by the manufacturer.
11. Unplug this apparatus during light storms or when unused for long periods of time.
12. Refer all servicing to qualified service personnel.  
Servicing is required when the apparatus has been damaged in any way, such as power-supply cord or plug is damaged, liquid has been spilled or objects have fallen into the apparatus, the apparatus has been exposed to rain or moisture, does not operate normally or has been dropped.
13. No naked flame sources, such as lit candles, should be placed on the apparatus.
14. Dispose of used electrical products and batteries safely according to your local authority and regulations.



**CAUTION**  
RISK OF ELECTRIC SHOCK  
DO NOT OPEN



**ATTENTION**  
RISQUE D'ELECTROCUTION  
NE PAS OUVRIR



**IMPORTANT:** Please read all instructions carefully before use and keep for future reference

## ADDITIONAL WARNINGS

The apparatus shall not be exposed to dripping or splashing and no objects filled with liquid, such as vases, shall be placed on apparatus.

Main plug is used to disconnect device and it should remain readily operable during intended use. In order to disconnect the apparatus from the main mains completely, the mains plug should be disconnected from the main socket outlet completely.

Battery shall not be exposed to excessive heat such as sunshine, fire or the like.

## RECYCLING ELECTRICAL PRODUCTS

You should now recycle your waste electrical goods and in doing so help the environment.



This symbol means an electrical product should not be disposed of with normal household waste. Please ensure it is taken to a suitable facility for disposal when finished with.

**IMPORTANT:** Please read all instructions carefully before use and keep for future reference



Risk of electric shock.  
Do not open



Read all instructions carefully before use and keep for future reference



When servicing, use only identical replacement parts



MAJORITY

[www.majorityradios.co.uk](http://www.majorityradios.co.uk)