

# D80 Bookshelf Speakers

User Manual

MAJORITY

---

HOME AUDIO • CAMBRIDGE

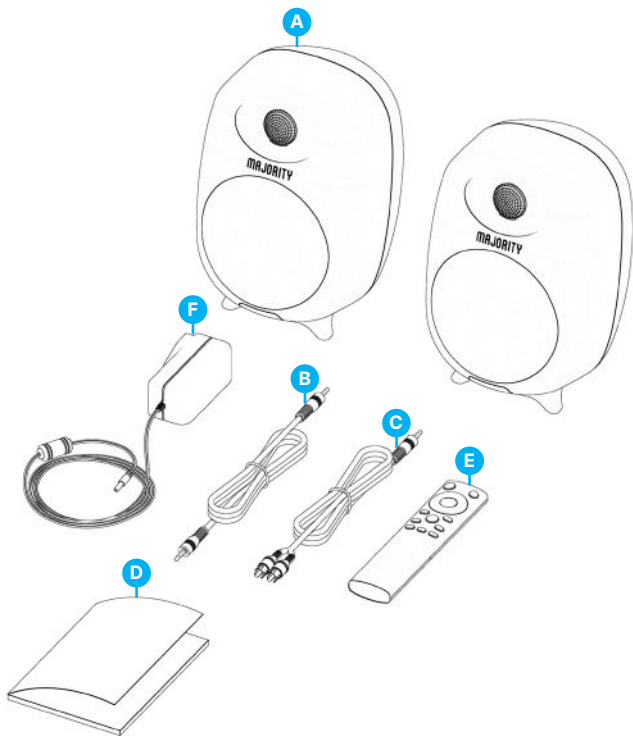
What's In the Box?.....	3
Controls And Functions.....	4
Instructions Guide.....	7
Setting up your Majority D80 Speakers.....	7
Basic Operation.....	8
Cable Connections – Optical, RCA, HDMI ARC.....	9
Bluetooth Mode.....	10
USB Playback Mode.....	11
Troubleshooting.....	12
Specification and Warranty.....	13
Warranty.....	14
Safety Information.....	15

**3 year**  
Warranty

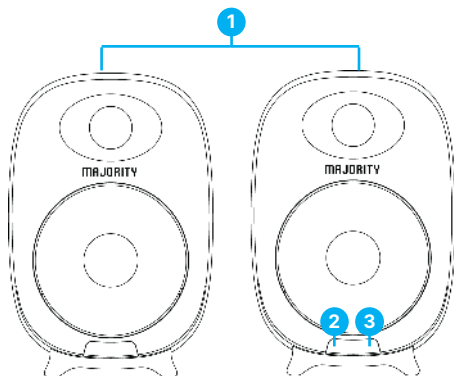
Register your product online for a FREE 3 year  
extended warranty at: [www.majority.co.uk](http://www.majority.co.uk)

## What's in the Box?

- |    |                                 |    |                |
|----|---------------------------------|----|----------------|
| A. | Majority D80 Bookshelf Speakers | E. | Remote Control |
| B. | Speakers connecting Cable       | F. | Power Adaptor  |
| C. | RCA Cable to AUX cable 3.5 mm   |    |                |
| D. | Instructions Guide              |    |                |



## LED Indicators and Button Introduction

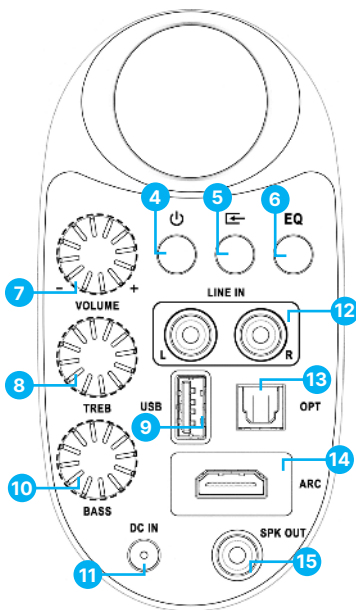


1. Active speakers
2. Infrared Receiver
3. LED Indicators

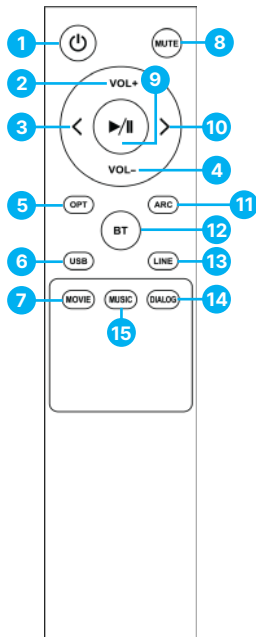
State	Indicator Lights
Power off	Red
Optical mode	White
USB	Purple
Line in mode	Light Blue
Bluetooth connected	Blue
ARC	Green

## Back View of the primary speaker

4. Power switch
5. Input button (change speakers mode)
6. EQ (Movie, Music & Dialogue)
7. Volume control
8. Treble control
9. USB playback input port
10. Bass control
11. DC IN Power cable port
12. 'Line in' input port
13. Optical input port
14. ARC input port
15. Speaker output (connect with the left speaker using connecting cable)



## Remote Control



1. Power button
2. Volume up
3. Previous track
4. Volume down
5. Optical mode
6. USB playback mode
7. Movie EQ
8. Mute button
9. Play/Pause
10. Next/ Forward
11. ARC mode
12. BT mode
13. Line-in mode
14. Dialog EQ
15. Music EQ

**Note: 'Movie,' 'Music' and 'Dialogue' are pre-defined equaliser sound effects which can be used while watching a movie, listening to music or news (dialogue). Alternatively, set the 'Bass' and 'Treble' as per your preferences.**

## Setting up your Majority D80 Speakers

*Please note that the instructions within this user manual will refer to the D80's button number on the main speaker e.g. (Ref. 'number') and to the remote-control buttons e.g. (Rem. 'number'), in accordance with the diagrams from pages 4-6.*

Remove all packaging and prepare the D80's for your set-up. Connect both speakers together using the connecting cable, insert one end on the left speaker back into the 'Speaker in' port and the other end into the 'Speaker output port' (**Ref.12**) on the back of the main speaker. Position the speakers on the left and right hand-side of the device you are about to connect with.

Using the power cord provided, plug one end into the DC IN power cable port which can be found at the back of the primary speaker (**Ref.11**) and plug the other end into a mains socket.

Prepare your remote for use. Remove the battery cover of the remote control. Insert 2 x AAA batteries (not included).

Ensure all cables are properly connected before switching the Majority D80 on, using either the 'Power' button on the main speaker (**Ref.4**) or using the 'Power' button on the remote control (**Rem.1**).

## Basic Operation

**Power ON/OFF:** Use the button on remote control (**Rem.1**) or the Power button which can be found on the back of the primary speaker (**Ref.4**) to switch the unit on/off.

**Change D80's speaker modes in between:** Bluetooth, USB, Line in (RCA), Optical or HDMI/ARC using the corresponding mode buttons on remote control: BT, OPT, ARC, USB or LINE. Alternatively, use the Input button which can be found on the back of the primary speaker (**Ref.2**).

The mode selected is indicated by the sensor LED light colour positioned on the front of the main speaker, such as:

- **Bluetooth** - Blue
- **Optical** - White
- **Line In/RCA** - Light Blue
- **HDMI Arc** - Green
- **USB** - Purple

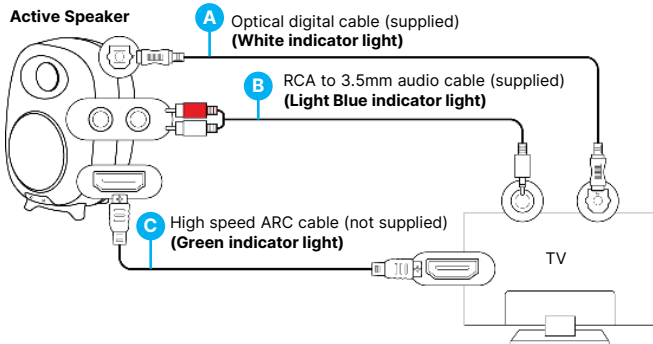
**Volume, treble and bass** can be changed/controlled as per your preferences in all modes. Alternatively, use the pre-defined equalisers (Movie, Music & Dialogue) by pressing the corresponding buttons on remote control, or use the 'EQ' button (**Ref.6**) on the back of the main speaker.



## Cable Connections

The Majority D80 speakers have multiple ports which can be used to connect with a TV, PC/laptop, phone, MP3 player, CD player, or any other devices which have an audio output port: Optical, AUX, HDMI ARC. Alternatively, The Majority D80 can be paired via Bluetooth.

**Connecting D80s with your device using a cable type:**



## Using Optical digital cable (not included)

- Insert an optical digital cable into the main speaker port **(Ref.10)** and the other end to your TV optical output port or other similar device that you are about to connect the speakers with.
- Change the mode to Optical, by pressing the 'OPT' button on the remote control or use the 'Input' button on the back of the main speaker **(Ref.5)**. The LED light sensor will turn white, indicating that the speakers are in Optical Mode.
- If you are connecting the speakers with a TV using an optical cable, make sure that your TV audio settings are set to 'Optical out' or 'PCM.'

## Using the RCA to AUX 3.5 mm cable

- Insert the RCA cable provided into the main speaker port L/R 'LINE IN' **(Ref.12)** and the other end of the cable, AUX (3.5 mm) into an AUX or headphone jack port of your device.
- Change the mode to 'LINE IN', by pressing the 'LINE' button on the remote control **(Rem.13)** or use the 'Input' button on the back of the main speaker **(Ref.5)**. The LED light sensor will turn light blue, indicating that the speakers are in 'LINE IN' Mode.
- If you are connecting the speakers with a TV using this cable, make sure your TV audio settings are set to PCM or Analogue.

## Using a high-speed HDMI ARC cable (not included)

- Insert an HDMI ARC cable, into the main speaker port 'ARC' port and the other end of the cable to your TV or other device- HDMI ARC port that you are about to connect the speakers with.
- Change the mode to 'ARC', by pressing the 'ARC' button on the remote control **(Rem.11)**. The LED light sensor will turn green, indicating that the speakers are in ARC Mode.
- If you are connecting the speakers with a TV using HDMI cable, make sure your TV audio settings are set to HDMI out or PCM.

## Bluetooth Mode – Pairing with a device

The Majority D80 can be paired with a device via Bluetooth such as a phone, a tablet, or any other Bluetooth-enabled device.

- To pair the Majority D80 with your device via Bluetooth, change the mode to Bluetooth by pressing the 'BT' button on the remote control **(Rem.12)**. Alternatively, use the 'Input button on the back of the main speaker **(Ref.3)**. The speaker's sensor LED light will flash dark blue, indicating that the speakers are ready to be paired.
- Switch Bluetooth on your device, and search for the Majority D80. On your devices list you will see 'Majority D80'. Select and connect.
- When successfully connected, you will hear an audible sound from the Majority D80 confirming that the devices are now paired. The sensor LED light indicator will stop flashing and now show a steady dark blue light. You can now play audio from your paired device via the Majority D80.
- To disconnect the Majority D80 while in Bluetooth mode from your device, simply remove the speakers from your list of devices. Once disconnected you will then hear an audible sound, indicating that the devices have been disconnected. The sensor LED light will then start flashing dark blue.
- While playing audio from your device, you can use the buttons on the remote control including the Next/Forward' **(Rem.10)** or 'Previous' **(Rem.3)** buttons on remote control to skip audio tracks.

***Note: The Majority D80 Speakers are not compatible with Bluetooth earbuds.***

## USB Playback Mode

- To use the Majority D80 in USB mode, press the 'USB' button on the remote control to change the speaker's mode. Alternatively, press the 'Input' button **(Ref.5)** on the main speaker to change the mode.
- The sensor LED light will turn purple, indicating that the Majority D80 is in the USB Playback Mode.
- Insert a USB stick into the USB port which can be found at the back of the main speaker **(Ref.6)** and use the remote-control functions to play, pause and navigate through the files.

***Note: The Majority D80s' are compatible with USB sticks of up to 128 GB. The supported audio files are MP3, WMA, FLAC, MAV, APE.***

The USB port cannot be used as a connection port with other devices as this is just for playback only.

Observation	Potential Cause/Solution
<b>No power/function</b>	<p>Check whether the power is switched on or off at the wall socket.</p> <p>Check if all cables are properly inserted.</p>
<b>No sound</b>	<p>Check whether the unit is set to MUTE.</p> <p>Check whether MODE is correctly selected. Turn up the volume on the speakers and on your external device.</p> <p>If connected with a TV, make sure the audio settings are adjusted as instructed in the user manual.</p> <p>Check if the audio port on your TV/device is an audio 'output' port not 'input.'</p>
<b>Any functionality issues</b>	<p>Switch off and unplug the speakers. Leave it for 2 minutes, re-connect and switch these on again.</p>
<b>Bluetooth not connecting</b>	<p>Ensure that the Majority D80 is in Bluetooth mode. Make sure these are not paired with other devices.</p>

## Support

If you require further assistance with your Majority product, please contact our support team on the Majority website: [www.majority.co.uk/support](http://www.majority.co.uk/support)

## Specification

<b>Power Supply</b>	100-240V/50-60Hz
<b>Mode</b>	Bluetooth Line in ARC USB Playback (reader) Optical
<b>Power consumption</b>	0.5W (Standby Mode)
<b>Dimensions</b>	230 x 155 x 155 mm
<b>Weight</b>	2.45 kg
<b>Speakers</b>	2x4" full range + 2x1" tweeter
<b>Bluetooth Version</b>	5.0
<b>Bluetooth Range</b>	Up to 10 metres
<b>Compatible file types</b>	MP3, WMA, FLAC, MAV, APE
<b>Maximum compatible USB storage</b>	128GB

## Warranty

All products come with a standard 12 month warranty. All items must be registered on [www.majority.co.uk](http://www.majority.co.uk) for the warranty to be valid. Once on the web page, use the menu to find 'Register Your Product'. You will also be given the chance to extend your warranty for an additional 24 months, free of charge.

1. Read these instructions.
2. Keep these instructions. Instructions are also available for download at [www.majority.co.uk](http://www.majority.co.uk).
3. Heed all warnings.
4. Follow all instructions.
5. Do not clean the apparatus near or with water.
6. Do not block any ventilation openings. Install in accordance with the manufacturer's instructions.
7. Do not block any ventilation openings. Install in accordance with the manufacturer's instructions.
8. Do not install near any heat sources such as radiators, heat registers, stoves, or other apparatus that produce heat.
9. Protect the power from being walked on or pinched particularly at plugs, convenience receptacles, and the point where they exit from the apparatus.
10. Only use accessories specified by the manufacturer.
11. Unplug this apparatus during light storms or when unused for long periods of time.
12. Refer all servicing to qualified service personnel.
13. No naked flame sources, such as a lit candle should be placed on the apparatus.
14. Dispose of used electrical products and batteries safely according to your local authority and regulations.

## ADDITIONAL WARNINGS

The apparatus shall not be exposed to dripping, splashing or objects filled with water.

The main plug is used to disconnect the device. In order to disconnect the apparatus from the main mains completely, the mains plug should be disconnected from the main socket outlet completely.

Battery shall not be exposed to excessive heat.

## RECYCLING ELECTRICAL PRODUCTS

You should now recycle your waste electrical goods and in doing so help the environment.



This symbol means an electrical product should not be disposed of with normal household waste. Please ensure it is taken to a suitable facility for disposal when finished.

**IMPORTANT: Please read all instructions carefully before use and keep for future reference.**



Risk of electric shock. Do not open.



Read all instructions carefully before use and keep for future reference.



When servicing, use only identical replacement parts.



### ATTENTION

RISK OF ELECTRIC SHOCK DO NOT OPEN



### CAUTION

RISQUE D'ELECTROCUTION NE PAS OUVRIR



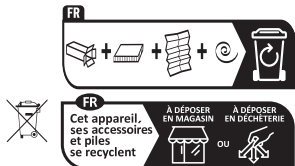
**IMPORTANT:** Please read all instructions carefully before use and keep for future reference





# MAJORITY

[www.majority.co.uk](http://www.majority.co.uk)



Points de collecte sur [www.quefairedemesdechets.fr](http://www.quefairedemesdechets.fr)  
Privilégiez la réparation ou le don de votre appareil !