

# Knapwell Digital Radio

User Manual

MAJORITY

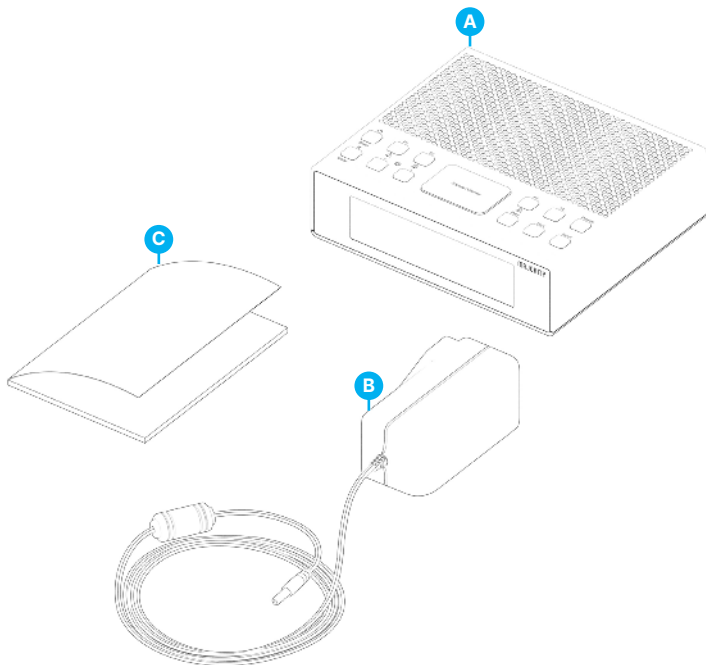
What's In the Box?.....	3
Controls And Functions.....	4
Instructions Guide.....	6
Basic Operation.....	6
DAB/DAB+ Radio.....	7
DAB/DAB+ Radio Presets.....	8
DAB/DAB+ Radio Station Information.....	9
FM Radio.....	10
FM Radio Presets.....	11
FM Radio Station Information.....	12
Bluetooth Mode.....	13
Settings : Clock and Date.....	14
Setting the Alarm.....	15
Other Alarm Functions.....	16
Radio Settings : System Menu.....	18
Additional Features.....	19
Troubleshooting.....	20
Specification and Warranty.....	21
Safety Information.....	22

**3 year**  
Warranty

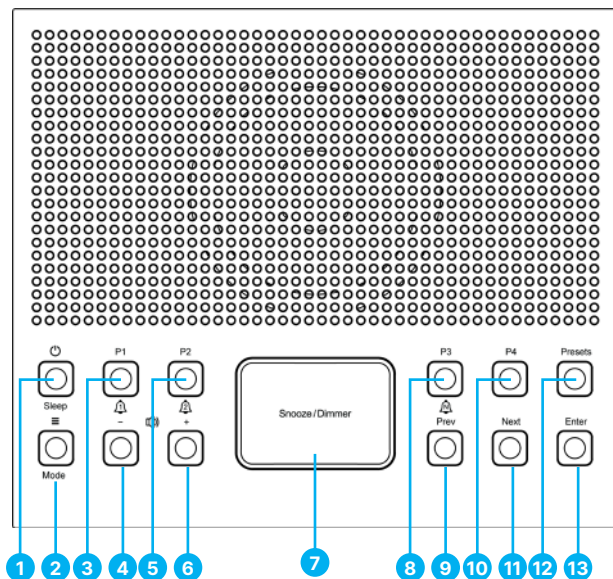
Register your product online for a FREE 3 year  
extended warranty at: [www.majority.co.uk](http://www.majority.co.uk)

## What's in the Box?

- A. Majority Knapwell Radio
- B. Power Adapter
- C. User Guide

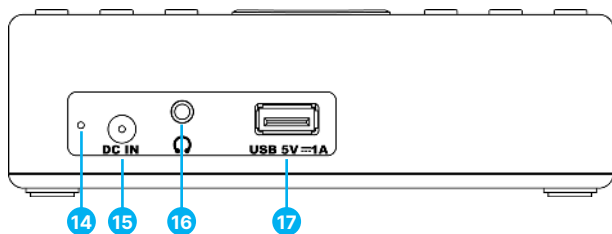


## Top View



- |                     |                  |
|---------------------|------------------|
| 1. Power/Sleep      | 7. Snooze/Dimmer |
| 2. Menu/Mode        | 8. Preset 3      |
| 3. Preset 1/Alarm 1 | 9. Prev          |
| 4. Vol-             | 10. Preset 4     |
| 5. Preset 2/Alarm 2 | 11. Next         |
| 6. Vol+             | 12. Presets      |
|                     | 13. Enter        |

## Back View



- 14. Pigtail Antenna
- 15. DC IN
- 16. Headphones Jack Port
- 17. USB Charging Port

## Basic Operation

*Please note all (Ref.) refer to Page 4-5 Controls and Functions mapping guide.*

## Getting Started

Plug the power cable into the mains and the other end into the DC port **(Ref.15)** which can be found at the back of the radio labelled 'DC IN'. Once plugged in with the cable, the radio will switch ON, and show 'WELCOME' on the screen.

Make sure the radio's pigtail antenna is fully extended so you can get the best possible radio signal.

At first use, the radio will automatically start scanning and store all available DAB radio stations at your location. Once the scan has been completed, the radio will then start playing the first stored DAB radio station.

Press and hold the 'Menu/Mode' button **(Ref.2)** for 2-3 seconds and then release to switch the radio mode in between DAB, FM and Bluetooth.

## Standby

To set the radio to Standby, press the 'Power/Sleep' **(Ref.1)** button.

## DAB/DAB+ Radio

Fully extend the pigtail antenna (**Ref.14**) to ensure that the best signal can be received before scanning.

From the 'Welcome' screen, your radio will automatically scan for DAB stations.

If the unit has not automatically scanned or if you would like to rescan the available stations, press the 'Menu/Mode' button (**Ref.2**) to enter radio 'Menu' option. Press either the 'Prev' or the 'Next' (**Ref.9/11**) buttons to find and select 'SCAN'. Press the 'Enter' button (**Ref.13**) to confirm and start scanning.

***Note: The date and time displayed on the DAB radio stations is also synchronised with the radio stations found.***

If you find your favourite radio stations with bad reception/signal, we recommend repeating this procedure. By selecting 'Scan' option, the radio will automatically search for available radio stations with best reception on the radio frequency band up and store all with good reception.

As soon as the full scan has been completed, the radio will automatically start playing at the first stored radio station.

To select a different radio station, use the 'Prev' or the 'Next' buttons (**Ref.9/11**) to find your desired station. Select the station by clicking the 'Enter' (**Ref.13**) button.

***Note: DAB mode is not indicated by displaying 'DAB' on the radio screen. The first available station will be displayed with rolling information text.***

## Rescanning DAB Stations

When on DAB mode, press 'Menu/Mode' (**Ref.2**) and select 'SCAN', to re-scan for available DAB stations at your location. Press 'Enter' to confirm. The radio will now begin scanning for DAB stations with the screen displaying 'SCAN'.

## DAB/DAB+ Presets

### Storing DAB Stations

You can store up to 40 DAB radio stations for easy navigation.

To store a station that you are currently playing:

Press and hold the 'Preset 1-4' (**Ref.3/5/8/10**) button for 2 seconds. Once saved, you will see a message on display saying 'Stored'. To save preset on position 5 or further, press and hold 'Presets' (**Ref.12**) button to save the station. The Preset Store settings will open, and the display will show 'EMPTY X'. Release the 'Preset' button.

Press the 'Prev' or 'Next' button (**Ref.9/11**) to change the '<1' to the number you want to store the station as. Press the 'Enter' (**Ref.13**) button to save the station to that preset number. The display will then show 'STORED'.

***Note: If there is an existing DAB station already stored under a preset number you wish to save, the new station will overwrite the existing one.***

### Recalling a stored DAB radio station

Press the "Preset 1-4" (**Ref.3/5/8/10**) button or 'Presets' (**Ref.12**) to open Preset Recall settings.

Press the 'Prev' or 'Next' button (**Ref.9/11**) to scroll through your preset stations. Once found, press the 'Enter' (**Ref.13**) button to confirm your selection and the radio station will automatically start playing.



## Radio station information for DAB/DAB+ Radio

While playing a DAB/DAB+ radio station with good signal, press the 'Enter' button **(Ref.13)** repeatedly to view different program information such as:

**Signal Strength:** Displays a signal bar with the strength of the current station.

**Bit Error Rate:** Provides details of the signal error rate.

**Channel and Frequency:** Displays the station's transmission channel number and frequency.

**PTY (Program Type):** Shows the type and description of the program me provided by the DAB station.

**Time and Date:** Displays the time and date information provided by the broadcaster.

**Bit Rate:** The data rate at which the signal is being transmitted.

**Dynamic Label Segment (DLS):** Displays scrolling text information supplied by the broadcaster.

## FM Radio

Press and hold the 'Menu/Mode' button **(Ref.2)** multiple times to switch between DAB, FM, and Bluetooth. The first time you switch to FM mode, the FM frequency '87.5 MHz' will be displayed on the screen.

Fully extend the pig-tail antenna **(Ref.14)**, before scanning.

To scan for the available stations with good signal up the bandwidth, press 'Menu/Mode' button **(Ref.2)** to step into 'Menu' option, using the 'Next' or the 'Prev' button, to find and select 'SCAN'. Press the 'Enter' button to confirm.

A full scan will automatically start up the frequency band. Once completed the next available station with good signal will begin to play.

To scan through the frequency band, press and hold down the 'Prev' button **(Ref.9)** for 2-3 seconds to search for the radio stations with good signal available.

## How to tune a specific frequency manually

To listen to a specific frequency, press and hold down the 'Next' button **(Ref.11)** to search up the bandwidth quickly. To search down the frequency band quickly, press and hold down 'Prev' button **(Ref.9)**. It will stop searching when the button is released.

To search slowly, press the 'Prev' or 'Next' **(Ref.9/11)** multiple times to search the band. Each button press will search with 00.50 MHz up or down, the frequency band.

## Stereo and Mono

While in FM Mode, press the 'Menu/Mode' button **(Ref.2)** to step into the 'Menu' option. Select 'AUDIO' by pressing 'Prev' or 'Next' **(Ref.9/11)**. Press the 'Enter' button **(Ref.13)** to confirm. Press 'Prev' or 'Next' **(Ref.9/11)** again to switch between Stereo and Mono mode. Press 'Enter' to confirm.

## FM Radio Presets

### Storing FM Stations

You can store up to 40 FM radio stations for easy navigation.

To store a station that you are currently playing:

Press and hold the 'Preset 1-4' (**Ref.3/5/8/10**) button for 2-3 seconds. Once saved, you will see a message on display saying 'Stored'. To save preset on position 5 or further, press and hold the 'Presets' (**Ref.12**) button to save the station. The Preset Store settings will open, and the display will show 'EMPTY X'. Release the 'Preset' button.

Press the 'Prev' or 'Next' button (**Ref.9/11**) to change the '<1' to the number you want to store the station as. Press the 'Enter' (**Ref.13**) button to save the station to your chosen preset number. The display will then show 'STORED'.

***Note: If there is an existing FM station already stored under a preset number you wish to save, the new station will overwrite the existing one.***

### Recalling a FM stored station

Press the 'Preset 1-4' (**Ref.3/5/8/10**) button or 'Presets' (**Ref.12**) button to open Preset Recall settings. Do not hold down the button as this will open Preset Store settings.

Press the 'Prev' or 'Next' button (**Ref.9/11**) to scroll through your preset stations. Once found, press the 'Enter' (**Ref.13**) button to confirm your selection, and the radio station will automatically start playing.

## Radio station Information for FM Radio

When you are listening to an FM radio station with good signal, you can press the 'Enter' button **(Ref.13)** repeatedly to view different program information, such as:

**PTY (Program Type):** Shows the type and description of the program provided by the FM station, if available.

**Signal Strength:** Displays a signal bar with the strength of the current station.

**Time and Date:** Displays the time and the date.

**Frequency:** Displays the station's transmission frequency.

**Audio Type:** Displays the audio type of the station you are listening to. It will either be Stereo or Mono.

**Radio Text:** Displays scrolling text information supplied by the broadcaster, if available.

## Bluetooth Mode

### Setting Up Bluetooth

Pair your radio with a phone, a tablet or similar device to play audio via the Knapwell's speaker.

To choose Bluetooth mode, press and hold the 'Menu/Mode' button **(Ref.2)** repeatedly until Bluetooth mode is selected.

Go into Bluetooth settings on your Bluetooth-enabled device and ensure that it is switched on. On your list of devices available, the 'Majority Knapwell' will appear. Select this option to connect. Once paired with your device, you will hear a beeping sound, and the radio screen will display 'Connected'. You can now start playing audio from your device.

The volume level, next or previous track can be changed from your device or from the Knapwell Radio using the 'Prev' and 'Next' buttons **(Ref.9/11)** on the radio.

The operational range between the unit and a Bluetooth device is approximately 10 metres without any obstructions.

***Note: Bluetooth earphones and earbuds are not compatible with this device.***

## Setting the Clock and the date

### Manually Setting the Time

Ensure the unit is in working mode (i.e. listening to DAB/FM Radio). Press the 'Menu/Mode' button **(Ref.2)** to enter the radio menu. Press 'Prev' or 'Next' **(Ref.9/11)** multiple times until you see 'SYSTEM'. Press the 'Enter' **(Ref.13)** button to confirm your selection.

Once entered, press 'Prev' or 'Next' button **(Ref.9/11)** again to select 'TIME'. Press the 'Enter' **(Ref.13)** button to confirm.

Use the 'Prev' or 'Next' **(Ref.9/11)** button to choose your option and select Time/Date by pressing 'Enter' button **(Ref.13)**.

The hour digital will now flash. Press the 'Prev' or 'Next' button **(Ref.9/11)** to select the correct hour. Press the 'Enter' button **(Ref.13)** to confirm.

Once this is confirmed, you will be able to press the 'Prev' or 'Next' button **(Ref.9/11)** to select the correct minutes. Press the 'Enter@' button **(Ref.13)** to confirm.

### Manually Setting the Date

After setting the time, the year digits will now flash. Press the 'Prev' or the 'Next' button **(Ref.9/11)** to select to the correct year. Press 'Enter' button **(Ref.13)** to confirm.

Once this confirmed, you will be directed to the month. To change the month, use the 'Prev' or the 'Next' buttons **(Ref.9/11)**. Press the 'Enter' button to confirm **(Ref.13)**.

After setting the year and the month, you will then be able to press the 'Prev' or the 'Next' button **(Ref.9/11)** to select the day. Press the 'Enter' button **(Ref.13)** to confirm.

## Setting: Dual Alarm Clock

### Setting the Alarm

Ensure the unit is in Standby Mode. Press the 'Preset 1/Alarm1' button **(Ref.3)** or 'Preset2/Alarm2' button **(Ref.5)** to open the 'Alarm' settings.

Press the 'Prev' or 'Next' button **(Ref.9/11)** to find 'Alarm 1' or 'Alarm 2' and select your choice by pressing the 'Enter' button **(Ref.13)** to confirm.

To switch the alarm ON or OFF, press the 'Prev' or the 'Next' button until 'ON' or 'OFF' is flashing on the screen. Press the 'Enter' **(Ref.13)** button to confirm your selection.

The hour digits of the alarm will flash. Press the 'Prev' or the 'Next' button until you see 'ON' or 'OFF' flashing. Press the 'Enter' **(Ref.13)** button to confirm your selection.

Once the hour has been set, the minutes will start flashing. Follow the same steps as per the hour settings to set the minute digits.. You can then choose the type of alarm sound you would like to have such as: Buzzer, DAB, or FM. Press the 'Enter' button to confirm.

***Note: If you choose DAB or FM mode as played sound, you have the option to choose either last played radio station or any other radio stations you have on the radio. You can use 'Press' and 'Next' buttons to navigate through these, select your desired station, then press the 'Enter' button to confirm.***

The last option for setting your alarm is to select 'Alarm Mode'. Choose one of the following to select the frequency: Once, Daily, Weekends or Weekdays only. Press the 'Enter' **(Ref.13)** button to confirm your selection. The alarm is then SAVED, as displayed on the screen.

***Note: You can press the 'Menu/Mode' button (Ref.2) to go back to the previous step when programming the alarm. When Alarm sounds, if no operations have been detected; it can last for one hour.***

## Settings: Alarm Functions and Snooze

### Turn OFF the alarm when sounding.

To turn OFF the Alarm 1 or Alarm 2 when sounding, press the 'Power/Mode' button **(Ref.1)**. This action will cancel the alarm set.

If the alarm is set to be ON for 'Weekdays', 'Weekends' or 'Daily', the alarm icon will be displayed on the radio screen on Standby Mode.

If the Alarm mode is set for 'Once' then the alarm icon will disappear from the radio display screen after sounding.

### How to cancel/deactivate an alarm already set.

While the radio is in Standby Mode, press Preset 1- for Alarm 1, or Preset 2 for Alarm 2, press then Enter **(Ref.13)** to access the alarm settings.

Press the 'Next' or the 'Prev' **(Ref.9/11)** buttons to scroll through the options until 'OFF' is flashing on the radio display. Press the 'Enter' **(Ref.13)** button to confirm.

### Snooze Function

When the alarm sounds, press the 'Snooze/Dimmer' button **(Ref.7)** to delay the alarm for another 5 minutes and the radio will go into Standby Mode.

To cancel the Snooze or stop the sounding alarm, press the Snooze/Dimmer button **(Ref.7)**.



## Sleep Timer

### Ensure the unit is in Standby Mode.

Press and hold the 'Power/Sleep' button **(Ref.8)** for 1-2 seconds to open the 'Sleep Timer' option. n. Press the 'Enter' button to confirm **(Ref.13)**.

The screen will now display 'OFF' by showing a bed icon. While flashing, use the 'Prev' and 'Next' buttons **(Ref.9/11)** to browse through a range of sleep timer lengths: 10/20/30/40/50/60/70/80/90 minutes or OFF.

When your choice is displayed, press the 'Enter' button to **(Ref.13)**. The unit will then automatically start the timer.

To turn the sleep timer off, follow the above instructions and select 'OFF' from the choices.

Once the timer has been set, an icon with a bed will be visible on the radio screen display.

## Radio Settings- 'SYSTEM' menu

When the radio is turned ON (not in Standby Mode), press the 'Menu/Mode' (**Ref.2**) button. Using the 'Prev' and the 'Next' (**Ref.9/11**) buttons, find 'SYSTEM' and select this option by pressing the 'Enter' button (**Ref.13**) to confirm.

Once in 'SYSTEM' menu, navigate through the sub-menus options listed below using the buttons 'Prev' and 'Next', (**Ref.9/11**). To access any of these sub-menus, press the 'Enter' button (**Ref.13**) to confirm.

The 'SYSTEM' has the following sub-menus:

**EQ:** The radio has a few audio presets that you can use as per your preferences, such as: Normal, Classic, Jazz, Pop, Rock, and Speech. Press the 'Enter' button (**Ref.13**) to confirm your choice.

**Time:** In this section you will find: 'Set Time' and 'Update'. Choose 'Set Time' to manually set the time and date or choose 'UPDATE' to choose how you would you like the time/date on your radio to be updated such as: using DAB radio, FM radio, or None. Press the 'Enter' button (**Ref.13**) to confirm your choice.

**Dimmer:** There are two options you can choose from such as 'Timeout' or 'Level'. Choose 'Level' to set the radio display backlight level to high, medium, or low light. Press the 'Enter' button (**Ref.13**) to confirm.

**Language:** Access this section if you would like to change the language.

There are 3 options: English, German and French. Press the 'Enter' button (**Ref.13**) to select your chosen language.

**Reset:** Choose this option to set your radio to factory default settings.

Press the 'Enter' button (**Ref.13**) and the display will show 'Factory Reset?'. Press the 'Prev' or 'Next' button (**Ref.9/11**) to select 'Yes' or 'No'. Select one of these and press the 'Enter' button again (**Ref.13**) to confirm.

**Note:** Once you process a reset of the radio to default, all stored radio stations and presets you have set on the radio will be deleted.

## System Version:

Press the 'Prev' or 'Next' button **(Ref.9/11)** in the 'Set Menu' screen to select to the sub-option of 'SW VER'. Press the 'Enter' button **(Ref.13)** to check the system version information.

## Additional Features

Headphone Jack:

Plug in your earphones via the 3.5mm headphone jack **(Ref.16)** to listen to audio from your radio.

## Display dim backlight:

The radio display backlight can be changed with a short press on the 'Snooze/Dimmer' button **(Ref.7)**. There are 3 levels you can choose from: Low, High, and Medium.

## Power Supply:

The unit is powered and charged by power adapter DC 5V 1A.

Observation	Potential Cause/Solution
<b>No sound</b>	The station is not tuned properly. Please perform a full scan and search again for available stations or manually scroll through available stations.
<b>Cannot preset stations</b>	Ensure that you are pressing and holding down the 'Preset' button for 2-3 seconds to open Preset Store Settings. Only press, do not hold to open Preset Recall.
<b>FM: Static sound DAB: Bubbling/intermittent cut-out</b>	Signal reception is low. Adjust the aerial and move the unit to a stronger signal location. Re-scan stations and or process a factory reset.
<b>Desired station not found</b>	Weak signal. Use the manual tune function and try rescanning in a different area.
<b>Display shows 'No Service'</b>	There is no DAB coverage in your area, or poor reception. Adjust the position of the aerial or move the unit to a stronger signal location.
<b>Display is blank</b>	This may occur if the broadcaster changes the label of a service or removes a label while tuned. The radio will try to retune or perform a scan.
<b>Time and Date not setting automatically</b>	Go to DAB mode and this will automatically set once a scan is performed. Alternatively, set in your 'Settings'.
<b>Sound is distorted</b>	The volume is too high. Adjust the volume control.

## Support

If you require further assistance with your Majority product, please contact our support team on the Majority website: [www.majority.co.uk/support](http://www.majority.co.uk/support)

## Specification

<b>Power Supply</b>	DC 5.0V 1.0A (100-240V)
<b>Modes</b>	DAB/DAB+ Band III 5A-13F 174-240MHz FM (87.5MHz - 108MHz) Bluetooth
<b>Output Connector</b>	3.5mm Earphone Jack
<b>Dimension (WxHxD)</b>	14 x 12 x 4 cm
<b>Net Weight</b>	286 g
<b>Manufacturer</b>	Shenzhen Adition Audio Science & Technology Co., Ltd
<b>Brand</b>	Majority
<b>Model No.</b>	AD0600501000UK/AD0600501000EU
<b>Input</b>	100-240V~, 50-60Hz, 0.2A Max
<b>Output</b>	5.0V – 1.0A 5.0W
<b>Average active efficiency</b>	75.26%
<b>No-load power consumption</b>	0.07W

## Warranty

All products come with a standard 12 month warranty. All items must be registered on [www.majority.co.uk](http://www.majority.co.uk) for the warranty to be valid. Once on the web page, use the menu to find 'Register Your Product'. You will also be given the chance to extend your warranty for an additional 24 months, free of charge.

1. Read these instructions.
2. Keep these instructions. Instructions are also available for download at [www.majority.co.uk](http://www.majority.co.uk).
3. Heed all warnings.
4. Follow all instructions.
5. Do not clean the apparatus near or with water.
6. Do not block any ventilation openings. Install in accordance with the manufacturer's instructions.
7. Do not block any ventilation openings. Install in accordance with the manufacturer's instructions.
8. Do not install near any heat sources such as radiators, heat registers, stoves, or other apparatus that produce heat.
9. Protect the power from being walked on or pinched particularly at plugs, convenience receptacles, and the point where they exit from the apparatus.
10. Only use accessories specified by the manufacturer.
11. Unplug this apparatus during light storms or when unused for long periods of time.
12. Refer all servicing to qualified service personnel.
13. No naked flame sources, such as a lit candle should be placed on the apparatus.
14. Dispose of used electrical products and batteries safely according to your local authority and regulations.

## ADDITIONAL WARNINGS

The apparatus shall not be exposed to dripping, splashing or objects filled with water.

The main plug is used to disconnect the device. In order to disconnect the apparatus from the main mains completely, the mains plug should be disconnected from the main socket outlet completely.

Battery shall not be exposed to excessive heat.

## RECYCLING ELECTRICAL PRODUCTS

You should now recycle your waste electrical goods and in doing so help the environment.



This symbol means an electrical product should not be disposed of with normal household waste. Please ensure it is taken to a suitable facility for disposal when finished.

**IMPORTANT: Please read all instructions carefully before use and keep for future reference.**



Risk of electric shock.  
Do not open.



Read all instructions carefully before use and keep for future reference.



When servicing, use only identical replacement parts.



### ATTENTION

RISK OF ELECTRIC SHOCK DO NOT OPEN



### CAUTION

RISQUE D'ELECTROCUTION NE PAS OUVRIR

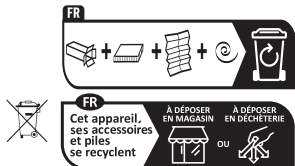


**IMPORTANT:** Please read all instructions carefully before use and keep for future reference



# MAJORITY

[www.majority.co.uk](http://www.majority.co.uk)



Points de collecte sur [www.quefairedemesdechets.fr](http://www.quefairedemesdechets.fr)  
Privilégiez la réparation ou le don de votre appareil !