

DX30

PC Speakers

User Manual

MAJORITY

HOME AUDIO • CAMBRIDGE

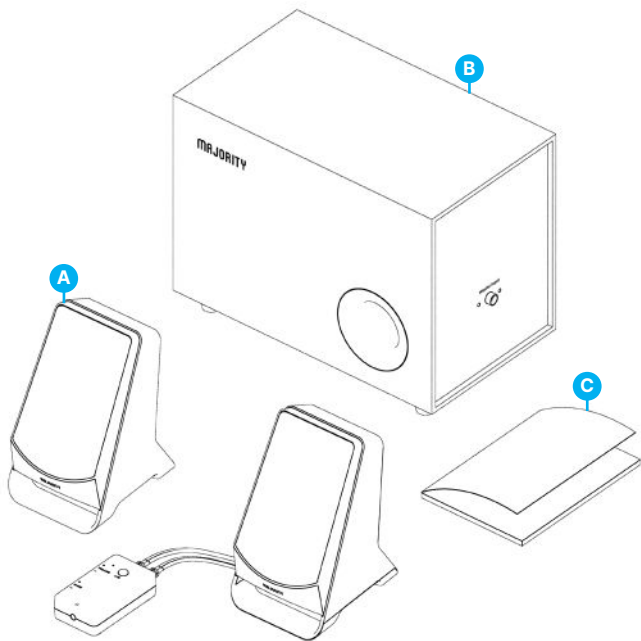
What's In the Box?.....	3
Controls And Functions.....	4
Instructions Guide.....	5
Basic Operation.....	5
AUX Mode.....	6
Bluetooth Mode.....	7
Headphones.....	8
Troubleshooting And Support.....	9
Specification.....	10
Warranty.....	10
Safety Information.....	11

3 year
Warranty

Register your product online for a FREE 3 year
extended warranty at: www.majority.co.uk

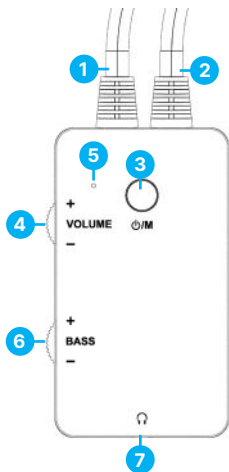
What's in the Box?

- A. Majority DX30 Speakers (1 x Left Speaker & 1 x Right Speaker)
- B. 1 x Subwoofer
- C. 1 x User Guide

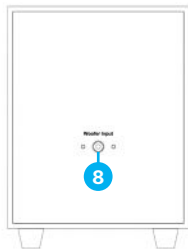
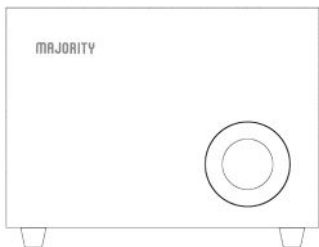


DX30 Embedded Remote Control

1. Embedded connecting cables : AUX and USB Cable
2. Embedded speakers and subwoofer connecting cables
3. Power/Mode Button
4. Volume Control
5. LED Light Indicator
6. Bass Control
7. Headphone Jack Port (3.5mm)



Subwoofer View



8. Woofer Input

Basic Operation

Please note that the instructions in this manual will refer to the remote-control buttons number e.g (Ref.'number') in accordance with the diagrams on page 4.

Remove all packaging before first use, position the speakers and subwoofer where you would like to have it, unwind all embedded cables, prepare for set-up.

Connect your speakers with the subwoofer using the embedded connecting cable **(Ref.1)**.

Connect the USB cable **(Ref.1)** to mains using an USB plug (not included) or connect the USB cable directly to a computer / laptop USB port.

To switch ON or OFF, press and hold down the 'Power/Mode' button **(Ref.3)** for 2-3 seconds.

To pause the sound on DX30 short press the 'Power/Mode' button **(Ref.3)** once and press once more to start playing audio.

To change between 'AUX' and 'Bluetooth' modes, short press twice on the 'Power/Mode' button.

Adjust the volume level using the rotary volume control on DX30 remote control **(Ref.4)**.

Control bass levels using the rotary BASS control **(Ref.6)**.

AUX Mode

The Majority DX30 can be connected using AUX, with a computer/laptop, or any other similar device which has an audio output port (AUX).

- Using the AUX cable (embedded cable), plug the other end to your computer/laptop, or other device -AUX port.
- Press and hold down the 'Power/Mode' button **(Ref.3)** for 2-3 seconds on the remote control to switch on.
- Once switched on, you will hear an audio saying 'AUX mode', indicating that the speakers are in AUX mode and can be used as such.
- The LED light indicator will turn show a blue light.

Short press the 'Power/ Mode' button **(Ref.3)** twice to switch modes in between AUX to Bluetooth Mode.

Bluetooth Mode

The Majority DX30 can be paired via Bluetooth with a phone, a tablet, or any other similar device that you would like to play audio from via the speakers.

- Short press the 'Power/Mode' button **(Ref.3)** twice to change the mode from AUX to Bluetooth Mode. You will then hear an audio saying 'Bluetooth Mode'. The LED light indicator will flash blue, indicating that the speakers are now ready to be paired with your device.
- Make sure your device has Bluetooth switched on. Search for 'Majority DX30' on your device and connect. The Majority DX30 will beep to indicate that your device is now paired with the Majority DX30. The LED indicator will show a blue light. You can now start playing audio from your device.
- Once paired, the DX30 will stay paired unless manually unpaired by the user, or until the device is reset.
- To unpair/disconnect your device, remove 'Majority DX30' from your device list that you paired with.
- While in Bluetooth Mode, when playing audio tracks, short press the 'Power/Mode' button **(Ref.3)** three times to skip and play the next audio track.
- While in Bluetooth Mode, the volume level is also influenced by the one set on your device. Please ensure that these are set as per your preferences.

Please note that Majority DX30 are not compatible with Bluetooth earbuds.

- Short press the 'Power/Mode' button **(Ref.3)** twice to switch modes between AUX to Bluetooth Mode or from Bluetooth mode back to AUX mode.

Headphones

The Majority DX30 PC speakers work with wired headphones. Connect the wired headphones (not included) with the Majority DX30 via the 3.5mm headphone jack port **(Ref.6)**.

Once connected, the sound will only be heard on your headphones.

Observation	Potential Cause/Solution
<p>Bluetooth does not/could not find the Majority DX30 on your device</p>	<p>Make sure the Majority DX30 are not paired with other devices via Bluetooth when trying to perform a Bluetooth/search connection.</p> <p>Make sure the speakers are in Bluetooth Mode.</p> <p>If you are having issues connecting via Bluetooth, try turning off the product and leaving it switched off for 5 minutes. Connect to power source again, switch speakers on, change mode into Bluetooth if needed, and start the pairing steps again as described in this user manual.</p>
<p>Bluetooth connected - No Sound</p>	<p>Increase volume on the Majority DX30 and on your device.</p> <p>Check and make sure the DX30 are not paused</p>
<p>AUX connection- Hissing sound</p>	<p>If the Majority DX30 is connected with a computer or a laptop using AUX cable and USB cable for charging connected with same PC, and you experience a hissing sound, then plug the USB cable to mains instead of computer/laptop USB port. Only keep AUX cable connected with PC.</p> <p>Check and make sure cables are not crossed over.</p>
<p>AUX connection – No Sound</p>	<p>Disconnect the speakers from device that you connected with, leave these for 5 minutes and then re-connect with your device making sure the AUX end cable is properly inserted. Increase volume on the Majority DX30 and on your device.</p> <p>Check audio settings on your device.</p> <p>Make sure the speakers are in AUX Mode.</p>

Support

If you require further assistance with your Majority product, please contact our support team on the Majority website: www.majority.co.uk/support

Specification

Power Supply	DC 5V/1A
Mode	Bluetooth 3.5 mm AUX-in
Product Dimensions	Speakers: 94mm x 118mm x 165mm. Subwoofer: 270mm x 155mm x 208mm
Weight	1.6 KG total weight 1 x 4"-subwoofer 2 x 3" Satellite
Bluetooth Version	5.2
Bluetooth Range	Up to 10 metres

Warranty

All products come with a standard 12 month warranty. All items must be registered on www.majority.co.uk for the warranty to be valid. Once on the web page, use the menu to find 'Register Your Product'. You will also be given the chance to extend your warranty for an additional 24 months, free of charge.

1. Read these instructions.
2. Keep these instructions. Instructions are also available for download at www.majority.co.uk.
3. Heed all warnings.
4. Follow all instructions.
5. Do not clean the apparatus near or with water.
6. Do not block any ventilation openings. Install in accordance with the manufacturer's instructions.
7. Do not block any ventilation openings. Install in accordance with the manufacturer's instructions.
8. Do not install near any heat sources such as radiators, heat registers, stoves, or other apparatus that produce heat.
9. Protect the power from being walked on or pinched particularly at plugs, convenience receptacles, and the point where they exit from the apparatus.
10. Only use accessories specified by the manufacturer.
11. Unplug this apparatus during light storms or when unused for long periods of time.
12. Refer all servicing to qualified service personnel.
13. No naked flame sources, such as a lit candle should be placed on the apparatus.
14. Dispose of used electrical products and batteries safely according to your local authority and regulations.

ADDITIONAL WARNINGS

The apparatus shall not be exposed to dripping, splashing or objects filled with water.

The main plug is used to disconnect the device. In order to disconnect the apparatus from the main mains completely, the mains plug should be disconnected from the main socket outlet completely.

Battery shall not be exposed to excessive heat.

RECYCLING ELECTRICAL PRODUCTS

You should now recycle your waste electrical goods and in doing so help the environment.



This symbol means an electrical product should not be disposed of with normal household waste. Please ensure it is taken to a suitable facility for disposal when finished.

IMPORTANT: Please read all instructions carefully before use and keep for future reference.



Risk of electric shock. Do not open.



Read all instructions carefully before use and keep for future reference.



When servicing, use only identical replacement parts.



ATTENTION

RISK OF ELECTRIC SHOCK DO NOT OPEN



CAUTION

RISQUE D'ELECTROCUTION NE PAS OUVRIR



IMPORTANT: Please read all instructions carefully before use and keep for future reference

